

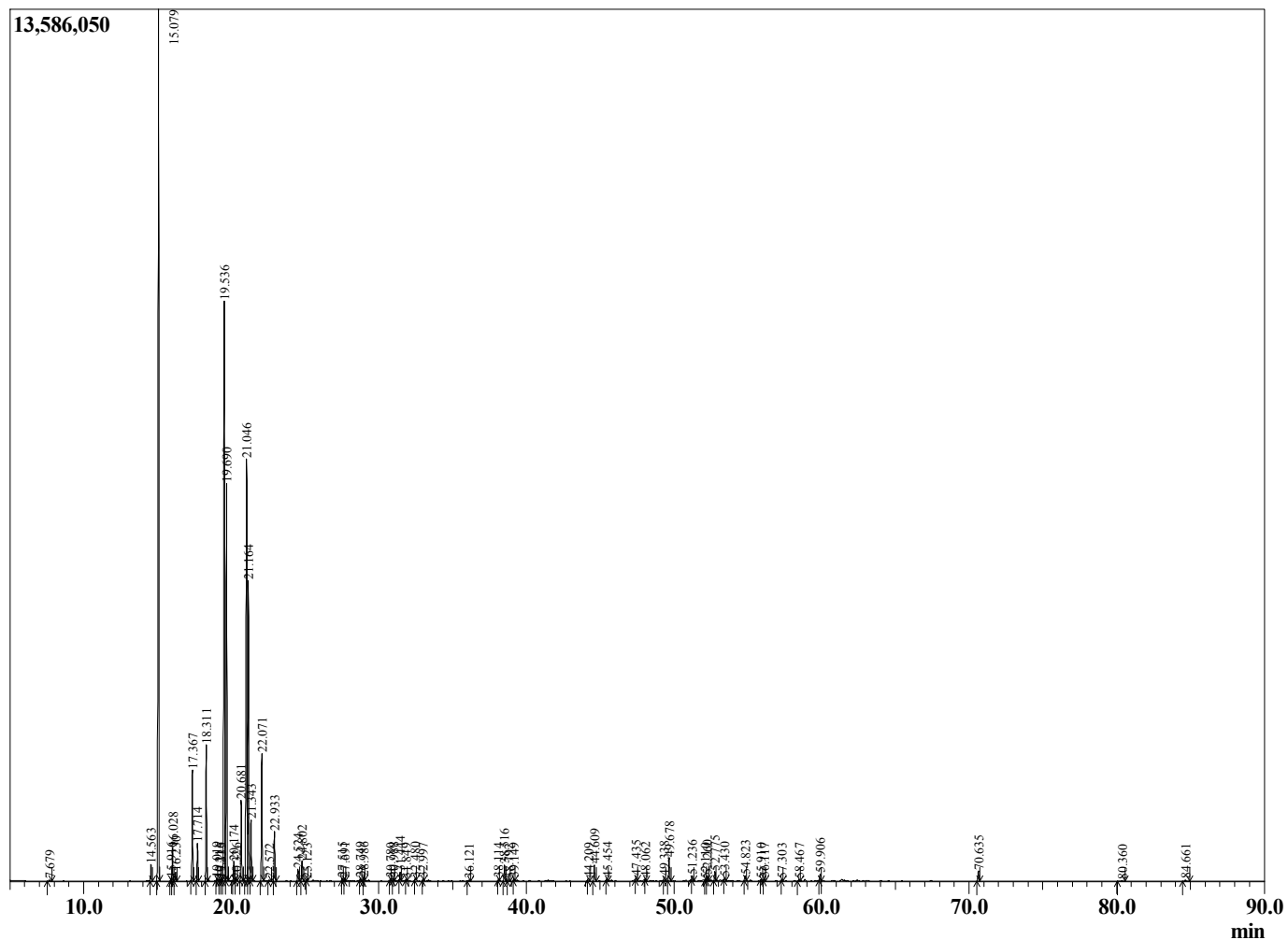
Sample Information

Analyzed : 8/17/2020 10:34:23 PM
 Sample Type : Essential Oil
 Sample Name : Angelica archangelica
 Injection Volume : 0.10

Angelica Root
 Lot# FRZ9-ZT
 Country: France



Chromatogram Angelica archangelica



R.Time	Name	Area%
7.679	Toluene	0.02
14.563	alpha-Thujene	0.40
15.079	alpha-Pinene	24.78
15.916	alpha-Fenchene	0.06
16.028	Camphene	0.80
16.230	Verbenene	0.21
17.367	Sabinene	2.76
17.714	beta-Pinene	0.95
18.311	Myrcene	3.50
19.019	2-Carene	0.06
19.216	Octanal	0.03
19.335	Pseudolimonene	0.04
19.536	alpha-Phellandrene	18.54
19.690	3-Carene	10.49
20.174	alpha-Terpinene	0.50
20.326	ortho-Cymene	0.05
20.681	para-Cymene	2.24
21.046	Limonene	14.22
21.164	beta-Phellandrene	8.08
21.343	(Z)-beta-Ocimene	1.60
22.071	(E)-beta-Ocimene	3.39
22.572	Unidentified	0.02
22.933	gamma-Terpinene	1.38
24.524	Isoterpinolene	0.33
24.802	Terpinolene	0.56
25.123	para-Cymenene	0.04
27.515	cis-p-Menth-2-en-1-ol	0.07
27.691	allo-Ocimene	0.07
28.749	trans-p-Menth-2-en-1-ol	0.07
28.986	trans-Verbenol	0.10
30.780	p-Mentha-1,5-dien-8-ol	0.05
30.988	1,3,5-Undecatriene	0.08
31.444	Terpinen-4-ol	0.23
31.849	Cryptone	0.04
32.480	Myrtenal	0.07
32.997	alpha-Phellandrene epoxide	0.05
36.121	Piperitone	0.04
38.114	Phellandral	0.05
38.516	Bornyl acetate	0.48
38.792	Sabinyl acetate	0.05
39.149	Unidentified	0.05
44.209	Isoledene	0.10
44.609	alpha-Copaene	0.52
45.454	beta-Elemene	0.06
47.435	trans-beta-Caryophyllene	0.12
48.062	beta-Copaene	0.06
49.338	(E)-beta-Farnesene	0.11
49.678	alpha-Humulene	0.77
51.236	Germacrene D	0.15
52.110	beta-Selinene	0.04
52.260	alpha-Muurolene	0.18
52.775	beta-Bisabolene	0.26
53.430	delta-Cadinene	0.09
54.823	alpha-Copaen-11-ol	0.16
55.910	Germacrene B	0.04
56.117	Unidentified	0.07

R.Time	Name	Area%
57.303	Unidentified	0.03
58.467	Carotol	0.05
59.906	omega-Tridecanolide	0.21
70.635	omega-Pentadecanolide	0.35
80.360	Unidentified	0.02
84.661	Osthole	0.06
		100.00